



For more information on this industrial area contact:
Economic.Research@capetown.gov.za

Produced by Enterprise and Investment and
Organisational, Policy and Planning Departments:
Directorate of the Mayor



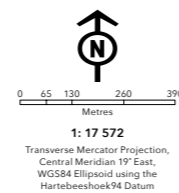
Philippi North Industria | 2017

- | | | |
|---|---|--|
| <ul style="list-style-type: none"> ● Accommodation and food service activities ● Administrative and support service activities ● Agriculture, forestry and fishing ● Arts, entertainment and recreation ● Construction ● Education ● Electricity, gas, steam and air-conditioning supply ● Financial and insurance activities ● Human health and social work activities ● Information and communication ● Manufacturing ● No activity | <ul style="list-style-type: none"> ● Other service activities ● Professional, scientific and technical service activities ● Public administration and defence, compulsory social security service activities ● Real estate activities ● Transportation and storage ● Unattainable ● Vacant unit ● Water reserve ● Water supply, sewerage, waste management and remediation activities ● Wholesale and retail trade, repair of motor vehicles and motorcycles ● IRT bus stops | <ul style="list-style-type: none"> ■ Road reserve ■ Under construction ■ Vacant land ■ Private residence ■ Suburbs ■ Land parcel ■ Greenbelt ■ Open space ■ Vacant building ■ Wetlands |
|---|---|--|



THIS MAP WAS COMPILED BY:
CITY MAPS
Development Information and GIS
Tel: +27 21 487 2711
Fax: +27 21 487 2821
city.maps@capetown.gov.za

Please note:
• Business names, economic activity and contact details were collected through primary data collection.
• Business contact details were verified directly from the business' website.
• In the event that the name or economic activity of a business could not be identified during primary data collection and it does not have an active website or contact details available to confirm business details, it has been listed as unattainable.



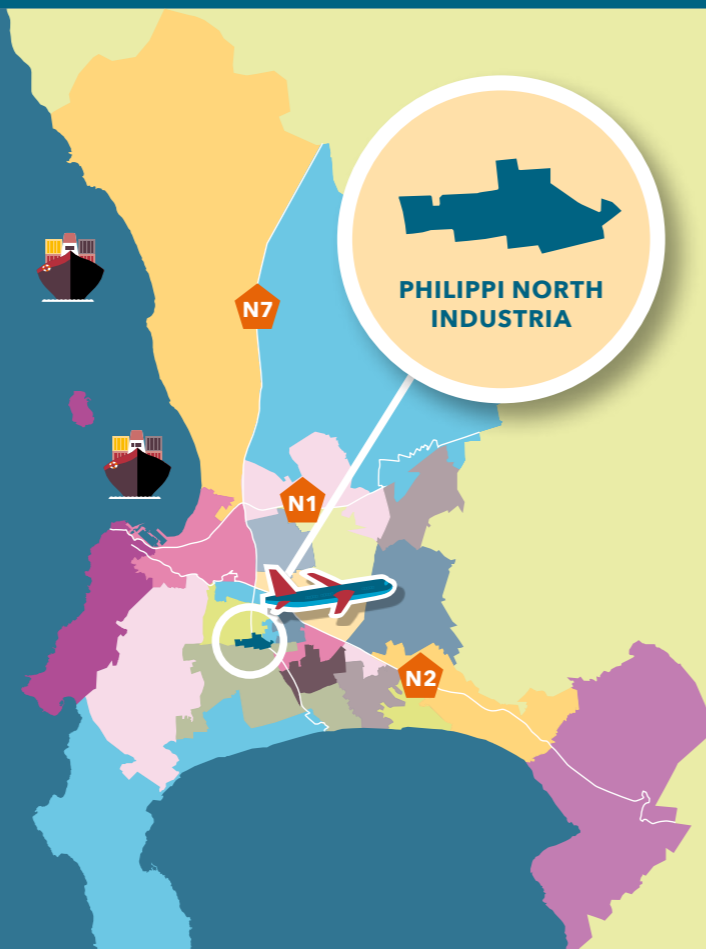
INDUSTRIAL SURVEY
PHILIPPI NORTH INDUSTRIA

PHILIPPI NORTH INDUSTRIA AT A GLANCE

Philippi North Industria is mapped across 280 land parcels of which 64% (178 land parcels) are occupied by economic activity and the remaining 36% (112 land parcels) are not, while 17% (113 land parcels) comprises private residences which are not included in the total number of land parcels.

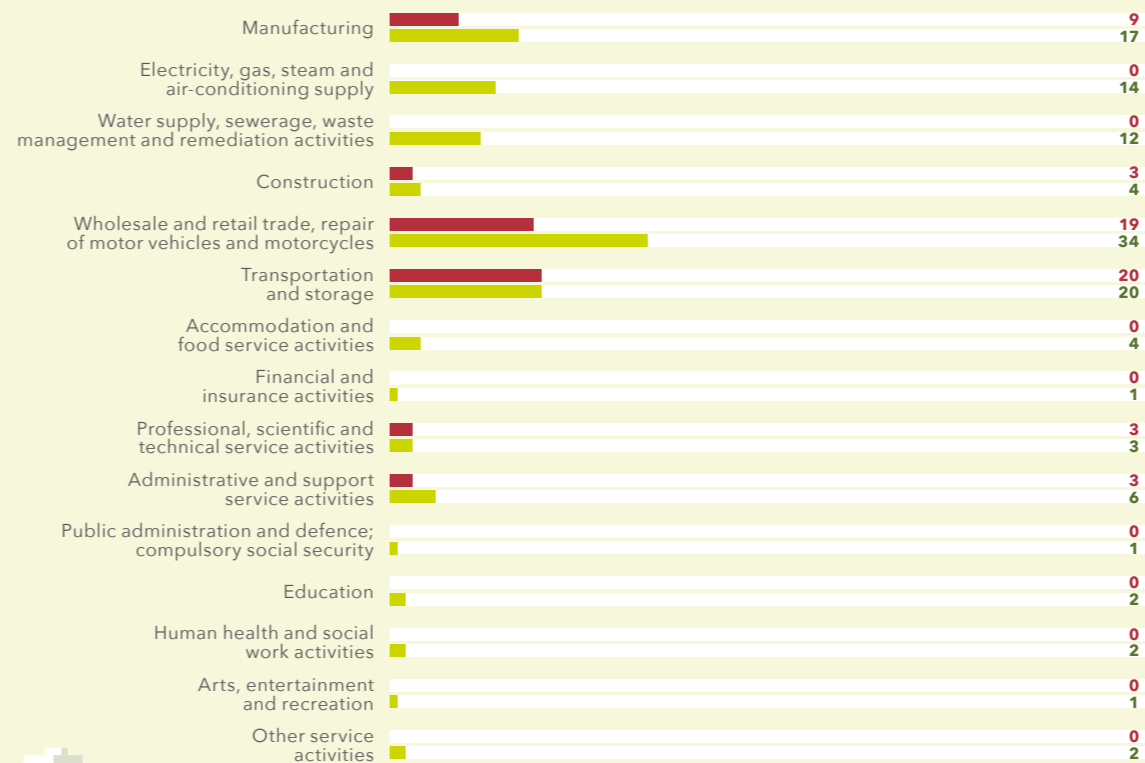
The 178 land parcels that are economically active in the Philippi North Industria area hosts 170 businesses, 123 businesses whose economic activity could be identified and 47 businesses that could not.

280 LAND PARCELS | **170 BUSINESSES**



TREND IN ECONOMIC ACTIVITY BETWEEN 2014 AND 2016

NO. OF BUSINESSES: 2014 VS 2016



Industrial area boundaries are subject to change over time so caution must be exercised in interpreting increases or decreases in the number of businesses per sector over the period.

INCREASED BY 8

Manufacturing

INCREASED BY 14

Electricity, gas, steam and air-conditioning supply

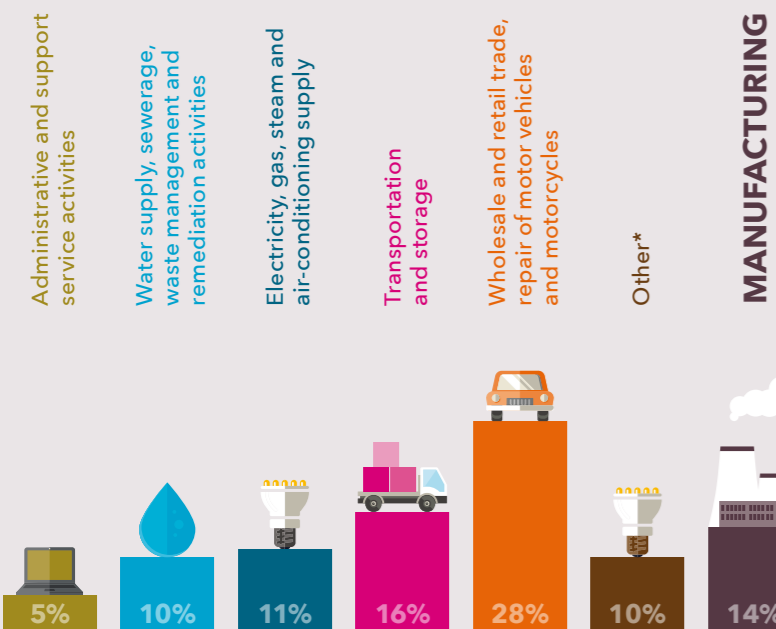
INCREASED BY 12

Water supply, sewerage, waste management and remediation activities

INCREASED BY 15

Wholesale and retail trade, repair of motor vehicles and motorcycles

ECONOMIC ACTIVITY OF BUSINESSES



Number of manufacturing businesses per division

Beverages	2
Fabricated metal products, except machinery and equipment	5
Food products	2
Furniture	1
Machinery and equipment not classified elsewhere	1
Other non-metallic mineral products	2
Paper and paper products	1
Repair and installation of machinery and equipment	1
Rubber and plastic products	1
Wood and product of wood and cork, except furniture; manufacture of articles of straw and plaiting materials	1

PROPERTIES AVAILABLE

48

VACANT LAND PARCELS

2

VACANT BUILDINGS

RANGE OF SQM LAND:

804 000 m² - 99 000 m²

RANGE OF SQM LAND*:

2 000 m² - 4 000 m²

LAND PARCEL SIZE RANGE:



LAND PARCEL SIZE RANGE:



● 0 - 4 999 m² ● 5 000 - 9 999 m² ● 10 000 - 49 999 m² ● 50 000 - 99 000 m² ● 100 000+ m²

*sqm of land parcel on which the business sits.

*Construction; Accommodation and food services; Professional, scientific and technical services; Education; Human health and social work activities; Other services; Financial and insurance activities; Public administration and defence, compulsory social security; Arts, entertainment and recreation